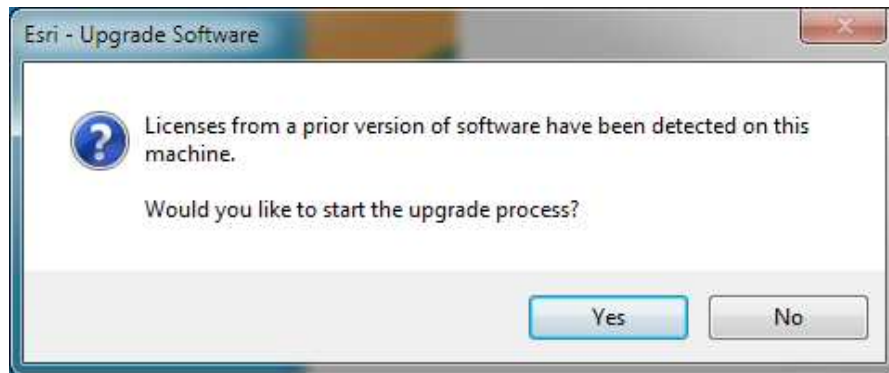
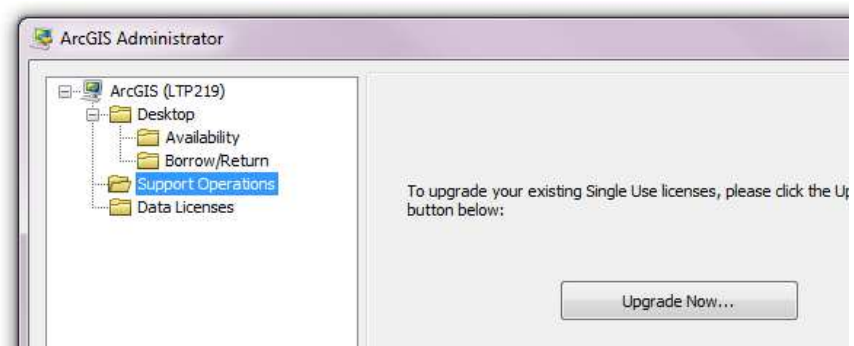


## Upgrade your license (SU)

At the end of the installation, you will be asked to upgrade. Click “Yes”.



If you don't want to upgrade immediately after the installation, you can do it later by opening ArcGIS Administrator by following this path: Start > All Programs > ArcGIS > ArcGIS Administrator. In the ArcGIS Administrator screen, click “Support Operations” in the screen on the left and then click “Upgrade now...”.



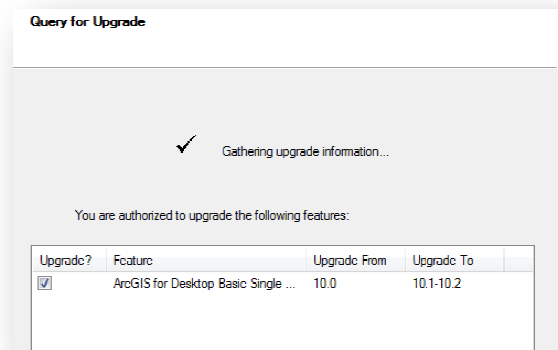
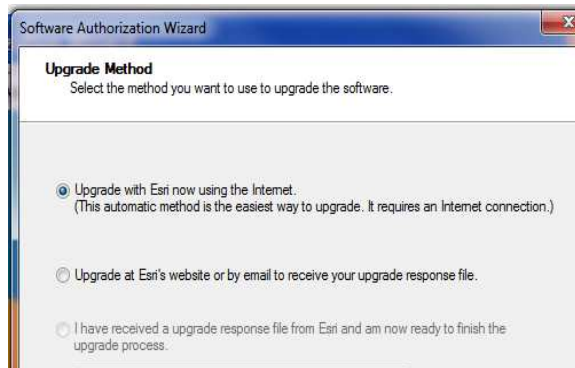
To complete the upgrade, an internet connection is required either on the computer on which you are working, or on another computer.

### Online Authorization

If you have an internet connection on the computer on which you are working, choose the first option: “Upgrade with Esri now using the internet”. This is the quickest and easiest way to authorize.

If no connection is available, choose option two: “Upgrade at Esri’s website or by e-mail to receive your upgrade response file”.

The procedure is identical, but ends with an “authorize.txt”- file saved on your computer. Do not forget to finish the last step of the procedure on another computer **with** internet access.



In the next screen you will see the licenses that can be upgraded. Mark the files you want to upgrade.

Click “Next” if you have chosen to authorize using the internet, the process will automatically be completed.

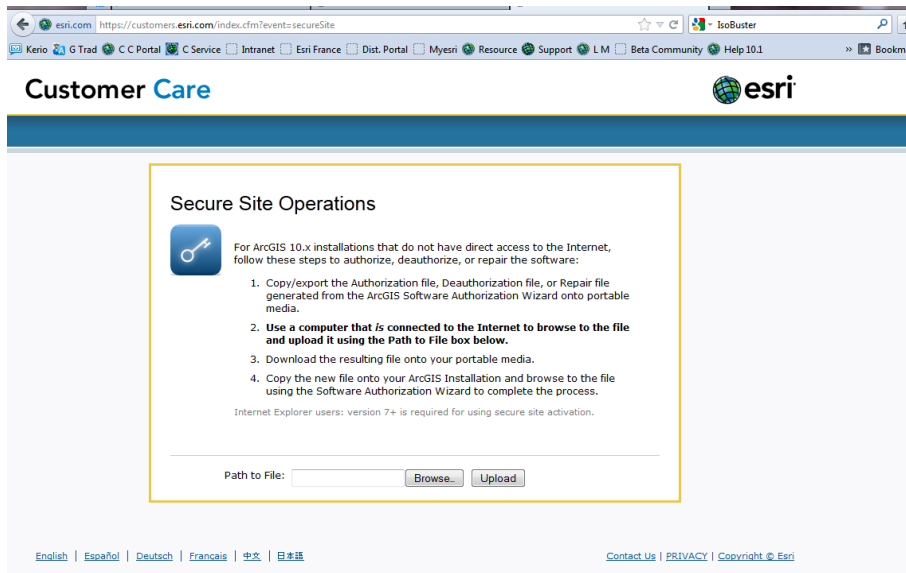
### Offline Authorization

If you have chosen the second option (no connection to the internet), click “Save”, so the information of the upgrade is registered in an information file “authorize.txt”. Please save this file.

Copy this file to a computer that has access to the internet (using a USB-stick or any other portable data storage device).

Next you need to choose one of the following two methods:

1. (recommended) Upload the information file (authorize.txt) using the website <https://service.esri.com/drm>.



Click "upload" and save the file "Authorization.respc".

2. Send the information file to the following e-mail address: [authorize@esri.com](mailto:authorize@esri.com). Esri will send you a "authorization.respc" file.

In both cases save the file on a portable storage device and return to the computer that needs to be authorized. Start the ArcGIS Administrator by following this path: Start > All Program's > ArcGIS > ArcGIS Administrator. In the ArcGIS Administrator screen, click "Support Operation" in the left screen, and then "Upgrade Now...". Choose "I have received an update response file from ESRI and am now ready to finish the authorization process" and upload the file "authorization.respc".

By clicking "Next", the process will be completed. Finally click "Finish".

Congratulations! You can start using ArcGIS 10.2!